



INSTRUCTIONS FOR SAMPLE COLLECTION

Thank you for collecting a child stool sample for BIS.

The stool sample should be frozen unless collected within 4 hours of delivery to the BIS team. Please keep the stool sample frozen until delivery and include the ice pack when transporting the sample to the BIS team.

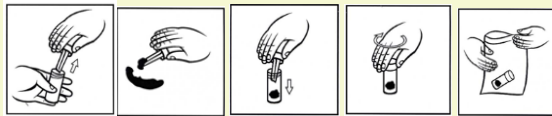
Provided in this pack: disposable gloves, stool specimen jar, clean foil tray, biohazard bag and ice pack (for preparation).

INSTRUCTIONS FOR PREPARING THE ICE PACK

- Put the ice pack (Envirofreeze ice replacement sachet) into a bowl or container.
- Pour ½ cup cold water onto it and soak the icepack till it fluffs up to approx. 2-3 cms in height.
- Freeze it until you need it. Make sure that the soft side of the ice pack is protected in the freezer so it doesn't stick or tear.
- Place frozen ice pack in the sealed specimen bags keep the samples cold when transporting to the BIS offices.

PROCEDURES:

1. Place ice pack in your freezer prior to sample collection.
2. Before collecting the sample, wash and dry your hands thoroughly, then put on the disposable gloves.
3. Get your child to empty their bladder before collecting the stool (poo) sample.
4. Place the foil tray in the toilet bowl, either on or above the surface of the water.
5. Get your child to empty their bowels directly into this large container.
6. Open specimen jar.
7. Using the scoop built into the lid of the specimen jar, collect a small amount of poo about the size of a twenty cent coin.
8. Place scooped poo sample into the specimen jar.
9. Firmly screw the lid on the specimen container (taking care that it is not cross-threaded).
10. Discard the remaining poo and foil tray into the bin
11. Fill out the sample collection details below and place in biohazard bag
12. Place the sealed specimen jar in the plastic hazard bag provided and immediately store in your freezer, unless attending a BIS appointment within 4 hours.
- 13.



Please deliver samples directly to the BIS team at your child's school on the day of the school visit.

For health and safety reasons, parents and guardians are to be solely responsible for dropping off samples. Under no circumstances are children allowed to deliver samples at the school visit.

Barwon Infant Study

EMAIL
bis@barwonhealth.org.au

MOBILE
0400 432 976

WEBSITE
barwoninfantstudy.org.au





PLEASE FILL OUT THE DETAILS BELOW & PUT IN SPECIMEN BAG

Child Stool Sample

BIS Child Name: _____

Date of collection: __/__/__

Time Collected: __:__ am/pm

Method of collection (Please circle):

- FRESH – Refrigerated (if within a 4 hours of delivery to BIS team)
- FROZEN (if not transported within a 4 hours of collection)

Any questions please call BIS 0400 432 976. Thank you!

Barwon Infant Study

EMAIL
bis@barwonhealth.org.au

MOBILE
0400 432 976

WEBSITE
barwoninfantstudy.org.au

